



GENERAL PRICE LIST

Effective as of July 30, 2025, and subject to change.

The goods and services shown below are those we can provide to our customers. You may choose only the items you desire. However, any funeral arrangements you select will include a charge for our basic services and overhead. If legal or other requirements mean you must buy any items you did not specifically ask for, we will explain the reason in writing on the statement we provide describing the funeral goods and services you selected.

Robert J. Prout, Senior Director

N.J. Lic. No. 3371

Nine Smull Avenue, Caldwell NJ 07006

973-226-1166 • www.dancyfuneralhome.com



Robert J. Prout
N.J. Lic. No. 3371
Senior Director

Julia R. Prout
N.J. Lic. No. 5228
Funeral Director

Raymond C. Trepkau
N.J. Lic. No. 4349
Funeral Director

Nine Smull Avenue
Caldwell NJ 07006
973-226-1166
www.dancyfuneralhome.com

Dancy Funeral Home, LLC is owned in its entirety by Julia R. Prout, Steven R. Prout and Margaret S. Prout. The Prout Family also owns and operates Prout Funeral Home, Inc. in Verona, NJ.

Good communication between your family and our staff is important regarding all aspects of the funeral arrangements. In order for the services to be meaningful to you, we must know what your needs and/or preferences might be. Some families may want photographs on display or a memory table of personal belongings—others may prefer special music, poetry or readings—still others may prefer a simple, quiet time of meditation. Your needs may be more unique. Whatever your wishes, we are here to answer your questions, help carry out your directions and guide you through this difficult time.

Good communication with regard to the financial arrangements is also important. When we meet with you to plan the funeral, a discussion of costs will take place, including a review of this General Price List, which is a menu of the many services that we offer. As we go over the individual services that you select and their cost, we will make note of them on an itemized “Statement of Funeral Goods and Services Selected”. For your protection and in the best interest of all concerned, you will receive a copy of each of these forms at the end of our conference.

Please note that it is not our intention to appear inconsiderate by discussing finances at this time. On the contrary, we hope to alleviate confusion over costs and be able to answer any questions that you may have regarding how a charge relates to your funeral plans or the personal choices that you have made.

Professional, compassionate care from the Prout family . . . since 1924.



We accept cash, check, NJ Prepaid Funeral Trust accounts, insurance assignments, ACH transfers and most major credit cards including American Express, Visa, MasterCard and Discover. Please note that ACH wire transfers will be assessed a 1% convenience fee; credit card payments made on line will be assessed a 3.252% convenience fee; credit card payments made at the funeral home via the card reader will be assessed a 3.04% convenience fee.

Credit Cards Accepted:



THE SIX CATEGORIES OF FUNERAL CHARGES ARE:

 Professional Services	 Ceremonies	 Transportation	 Cash Disbursements	 Merchandise	 Optional Packaged Services
---	--	--	--	---	--

Professional Services

PROFESSIONAL SERVICES OF FUNERAL DIRECTOR AND STAFF

Basic Services of Funeral Director and Staff

Services included, but not limited to: (1) responding to the initial request for service; (2) conducting the arrangement conference; (3) preparation of biographical and statistical data; (4) examination of financial settlement options; (5) preparation and filing of papers, permits and authorizations; (6) coordination with those providing other services; (7) preparation and placement of obituary notices; (8) retention and care of remains prior to commencement of post-death activities; (9) overhead expenses relative to our facility and operations, such as occupancy, administrative and equipment costs.

This fee for our basic services and overhead will be added to the total cost of the funeral arrangements you select. (This fee is already included in our charges for direct cremations, immediate burials, and forwarding or receiving remains.)

- Basic services of funeral director and staff \$3,595
- Special service of funeral director and staff *per hour* \$125

Embalming (including use of preparation room and sanitary care) Except in certain special cases, embalming is not required by law. Embalming may be necessary, however, if you select certain funeral arrangements, such as a funeral with viewing. If you do not want embalming, you usually have the right to choose an arrangement that does not require you to pay for it, such as direct cremation or immediate burial. *If you choose to have an embalming performed, the decedent may be embalmed at a location other than this registered mortuary.*

No human remains may remain unburied or uncremated in New Jersey for more than 48 hours unless embalmed or refrigerated. (N.J.A.C. 8:9-1.1)

- Standard embalming \$1,175

Other Preparation of the Body

(including use of preparation room but excluding embalming)

- Dressing, casketing and cosmetizing. \$725
- Restoration and other procedures. *per hour* \$175
- Sanitary care (topical disinfection), without embalming \$695
- Special autopsy care
(extra preparation required as a result of an autopsy) \$300
- Readjustment and repositioning following transfer
from another funeral home \$325
- Tahara (ritual purification) will be performed in the religiously
approved manner by qualified persons and verified to the Rabbi. . . \$825
- Cleansing and shrouding for natural burial \$825
- Private identification (30 minutes) \$450

FUNERALS CAN TAKE MANY FORMS

A "traditional funeral" would customarily include:

SERVICES

- Basic services of funeral
director and staff \$3,595
- Embalming 1,175
- Dressing, casketing
and cosmetizing 725

CEREMONIES (local)

- Visiting from 4–7 PM 1,500
- At funeral home and then
to church/synagogue and
accompaniment of remains
to final committal 900

TRANSPORTATION (local)

- Transfer of deceased from place of death
to funeral home. 625
- Hearse 650

MERCHANDISE

- Prayer cards, per 100 145
- Acknowledgment cards, per 50 30
- Memorial booklet 65

SUBTOTAL \$9,410

CHOOSE WHAT IS RIGHT FOR YOU.

This fee is for a funeral service with one day of visitation. You may add to or delete any item, except the "Basic services of funeral director and staff."

ADD TO THE SUBTOTAL, the cost of any casket, outer burial container or cash advance items to arrive at the estimated total funeral cost.



Professional Services

PROFESSIONAL SERVICES OF FUNERAL DIRECTOR AND STAFF

Celebrant

Our funeral home provides the services of a Certified Funeral Celebrant to help create a unique, personalized funeral ceremony. Certified Celebrants are specially trained to conduct personal services for families at the time of death.

This commemoration is an ideal option for those not affiliated with a church or who do not wish to have a religious funeral service. Our Certified Celebrant can also work with your clergy in an effort to create a unique celebration of the life lived.

■ Celebrant Services *from* \$350



Ceremonies

rites, rituals, observances, visitations

Viewing and Visitation at Our Funeral Home

Includes use of our facilities and staff for setup of the visitation area, placement of remains, positioning of floral displays, and supervision and one door attendant during the hours of visitation.

- Visitation service by the hour
(viewing room and support staff) . . . *per hour* \$500
- Additional support staff per session . . . *per hour* \$35

Funeral Ceremony

Includes use of our facilities and staff for coordinating the arrangements for the ceremony, staff supervision and attendance, use of the funeral home when used for the ceremony and *supervision to place of final committal* within one hour traveling time of funeral home.

- At funeral home \$800
- At church or synagogue or other location,
local \$800
- From funeral home to church or synagogue . . \$900
- Additional charge per hour outside area \$95

Memorial Service

(without body present)

Includes use of our facilities and staff for coordinating the arrangements for the memorial service, staff supervision and attendance, and the use of the funeral home when used for the memorial service.

- At the funeral home \$850
- At the funeral home on Saturday afternoon . . \$725
- At other local facility
(within one hour traveling distance). \$275

At the Graveside Service

(whether at cemetery or crematory)

Includes use of our equipment and staff for supervision, attendance and accompaniment of the remains to the cemetery or crematory.

- Local (within one hour traveling distance) . . \$675
- Additional charge outside local area . . *per hour* \$95

Sheltering of Remains

This is a per day charge that will apply when the funeral home is in possession of the remains, except for those days when preparation of the remains, visitation or service take place. *per day* \$175
Shomer (Watcher) *per shift* \$350

Transportation

LOCAL AND LONG DISTANCES

Transfer of Remains to Funeral Home

■ Local (within 10 miles)	\$625
■ Additional charge outside local area, one way <i>per mile</i>	\$3.00
■ Additional assistant charge for transfer when the location of death, placement or weight and size of the deceased necessitates it	\$100
■ Transfer from Newark Airport	\$675
■ Transfer from NYC Airports	\$750

Vehicles (Hearse, limousine and flower car based on three-hour use. Additional charge of \$50 per half hour over the three hours.)

■ Hearse, local	\$650
■ Limousine (7 passenger), local	\$825
■ EV Family sedan (3-4 passenger), local	\$325
■ Flower car, local	\$695
■ Van for flowers, local.	\$325

Cash Disbursements

ADDITIONAL EXPENSES

Arranging the funeral ceremony and committal often requires the funeral home to pay others on your behalf. We do not charge for this service. An example of the people who may expect payment in advance include the cemetery, church/synagogue or clergy. Often the timing of the funeral arrangements—hour, date, or holidays—may make it necessary for us to estimate what advances you want us to make on your behalf.

This list does not include prices for certain items that you may ask us to buy for you, such as cemetery or crematory services, flowers and newspaper notices. The prices for those items will be shown on your bill or the statement describing the funeral goods and services you selected.



FUNERALS CAN TAKE MANY FORMS

A “traditional funeral” would customarily include:

SERVICES

Basic services of funeral director and staff	\$3,595
Embalming	1,175
Dressing, casketing and cosmetizing	725

CEREMONIES (local)

Visiting from 4–7 PM	1,500
At funeral home and then to church/synagogue and accompaniment of remains to final committal	900

TRANSPORTATION (local)

Transfer of deceased from place of death to funeral home.	625
Hearse	650

MERCHANDISE

Prayer cards, per 100	145
Acknowledgment cards, per 50	30
Memorial booklet	65

SUBTOTAL \$9,410

CHOOSE WHAT IS RIGHT FOR YOU.

This fee is for a funeral service with one day of visitation. You may add to or delete any item, except the “Basic services of funeral director and staff.”

ADD TO THE SUBTOTAL, the cost of any casket, outer burial container or cash advance items to arrive at the estimated total funeral cost.

We suggest that for the time of visitation and funeral someone remain in your home or a close neighbor maintain a watchful eye during your absence.

Merchandise

CASKET PRICE LIST

STEEL CASKETS

Model Name	Material	Interior	Mfr. #	Price
Pieta*	18 gauge steel	arbutus velvet	M-71007753	\$4,105
Neopolitan	18 gauge steel	blue crepe	M-71006039	3,841
H25*	18 gauge steel	silver crepe	M-71008121	3,675
Hyacinth*	18 gauge steel	pink crepe	M-71007926	3,675
Freedom 887*	18 gauge steel	uniform blue	M-A08466	3,125
Phoenix Tuscany*	18 gauge steel	pink alpine crepe	M-71007798	3,095
Sierra*	18 gauge steel	crepe	M-71011006	2,859
Revere*	18 gauge steel	crepe	M-71007381	2,590
Atlantic*	20 gauge steel	crepe	M-71008935	2,308
Jessup*	20 gauge steel	crepe	M-41065172	2,025
Bradford*	20 gauge steel	crepe	M-71007289	1,435



Freedom 887



Phoenix Tuscany

BRONZE AND COPPER CASKETS

Model Name	Material	Interior	Mfr. #	Price
Venetian	48 oz bronze	champagne velvet	Z64	\$13,925
H-11*	solid copper	arbutus velvet	M-71008123	8,435

STAINLESS STEEL CASKETS

Model Name	Material	Interior	Mfr. #	Price
Champagne Rose*	Stainless Steel	pink velvet	M-71007865	\$5,075



Revere

SUSTAINABLE CASKETS

Model Name	Material	Interior	Mfr. #	Price
White Willow*	willow	unbleached cotton	WIL-CKWH-59	\$2,335
Willow*	willow (curved)	unbleached cotton	WIL-CK-59	2,100
Seagrass*	willow, seagrass & wicker	unbleached cotton	SEA-CK-59	2,045
Bamboo*	bamboo	unbleached cotton	BAM-CK-59	1,960
Jamin*	pine	no fabric	M715	1,645
Willow Tray*	willow	unbleached cotton	WCBT02	685



Seagrass

Warranty Disclaimer: Our Funeral Home makes no representations or warranties regarding caskets, outer burial containers or other funeral goods sold by the funeral home. The only warranties, express or implied, granted in connection with the goods sold with this funeral service are the express written warranties, if any, extended by the manufacturers thereof. No other warranties, express or implied, including the implied warranties of merchantability or fitness for a particular purpose, are extended by the funeral home. No burial product or process offered by this firm prevents the decomposition of remains.

WOOD CASKETS

Model Name	Material	Interior	Mfr. #	Price
Michelangelo*	maple	ivory velvet	M-71007687	\$5,675
Gatewood*	cherry	ivory velvet	M-71007695	5,465
Sovereign*	pecan	ivory velvet	M-71007665	4,835
Cameo	poplar	pink velvet	M-71006940	4,368
Hearthside*	oak	rosetan crepe	M-71006720	4,395
Du Valais	oak	rosetan crepe	M-71007723	4,054
Hudson*	poplar	rosetan crepe	M-71007681	3,995
Daniel*	poplar	rosetan crepe	M-71008206	3,080
Adirondack*	pine	rosetan crepe	M-71009100	2,805
Lisan - Corner Art	poplar veneer	rosetan crepe	M-71214636	2,717
Endicott	poplar veneer	rosetan crepe	M-71009725	2,368
Ashford*	poplar veneer	rosetan crepe	M-71007912	2,145
Westward	poplar veneer	rosetan crepe	TH-3080	2,145



Gatewood



Adirondack

ORTHODOX CASKETS

Model Name	Material	Interior	Mfr. #	Price
Obadiah	poplar	rosetan crepe	M-71006663	\$2,758
Dan	poplar	white dexter	M-71006572	1,539
Shiloh	unfinished pine	no interior	M-71006971	1,055

CREMATION CASKETS

Model Name	Material	Interior	Mfr. #	Price
Longley*	carte veneer	rosetan crepe	M-71013295	\$1,590
Kinsey*	cardboard	ivory crepe	M-70000538	1,200
Rental - Norwood	oak	crepe		995
6-Point Bamboo	bamboo	cotton	BAM-CK6PT-65	940
Dawson Flat Top*	cardboard	ivory crepe	M-71063622	775
Simple Bamboo	bamboo	cotton	BAM-CKCC-65	750
Union Flat Top	cardboard	ivory crepe	M-70000656	675
Alternative Container	fiberboard with wood base	no lining		95



Kinsey



Norwood Oak

Caskets manufactured by Batesville, Matthews Aurora™ Funeral Solutions, Passages International, Inc. and Thacker caskets, Inc.

* Available in Full Open

Merchandise

OUTER BURIAL CONTAINER PRICE LIST (VAULTS)

In most areas of the country, state or local law does not require that you buy a container to surround the casket in the grave. However, many cemeteries require that you have such a container so that the grave will not sink in. Either a grave liner or a burial vault will satisfy these requirements.

If your plot is in a cemetery that requires a concrete container and you wish to be more sustainable, a simple grave liner with an open bottom will usually satisfy the cemetery requirements and allow you to become one with the earth.

TRIPLE WALLS

Athenian® \$4,430

Steel reinforced concrete with ABS Fiberlon® plastic liner for added protection and the beauty of a stainless steel inner liner for extra strength.



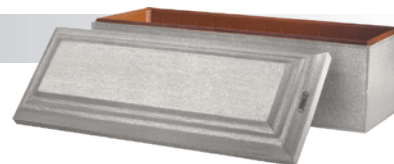
Lydian® \$5,475

Steel reinforced concrete with ABS Fiberlon® plastic liner for added protection and the beauty of a copper inner liner for extra strength.

DOUBLE WALLS

Titan® \$2,630

Steel reinforced concrete with Durapreme® polystyrene plastic liner with strengthening ribs on all sides for added protection.



Phoenix® \$2,920

Steel reinforced concrete with Durapreme® polystyrene plastic liner with strengthening ribs on all sides for added protection. Includes decorative handles and two-tone finish.

Patrician® \$3,335

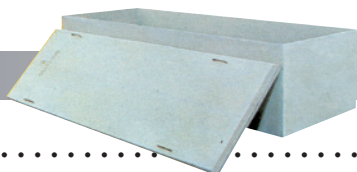
Steel reinforced concrete with ABS Lustra-Tech® plastic liner with strengthening ribs on all sides for added protection.



GRAVE LINERS & OTHER

Basic Urn Vault \$575

Sealed, unlined, steel reinforced concrete cremation urn vault



Zinc Tray \$610

Ensure a Seal. \$995

Mausoguard Tray/Mausoleum Protector \$885

Liner \$1,945

Standard Vault \$2,035

Lydian®, Athenian®, Patrician®, Phoenix®, Titan®, Fiberlon®, Lustra-Tech® and Durapreme® are trademarks of Doric Products, Inc.

Merchandise

URNS, CARDS, CLOTHING

Urns

Urns range in price from \$75 to 10,000

Other Merchandise

1. Memorial booklet \$65 to \$100
2. Services folder, *per 50* \$75 to \$350
3. Acknowledgment cards, *per 50* \$30 to \$250
4. Prayer cards, *per 100* \$145 to \$600
5. Memorial package (includes: memorial booklet, prayer cards (100) and acknowledgment cards (50)) \$225
6. Crucifix \$25
7. Shiva candle \$15
8. Shrouds: muslin \$165
lineene \$210
linen \$250
9. Shiva bench (if not returned) \$5
10. Clothing: women's dresses \$140 to \$350
men's suits \$175 to \$500

Plan with Ease, Wherever You Are

Our Online Planning Portal makes it simple to plan a funeral--whether it's a large gathering or an intimate farewell. Accessible from anywhere, it allows you to share details with family, delegate tasks, and stay organized with guided checklists. After the service, our portal continues to support you by walking you through important next steps like closing online accounts, memorializing social media profiles, locating life insurance policies, and more. Compassionate guidance, right at your fingertips.



FUNERALS CAN TAKE MANY FORMS

A "traditional funeral" would customarily include:

SERVICES

- Basic services of funeral director and staff \$3,595
- Embalming 1,175
- Dressing, casketing and cosmetizing 725

CEREMONIES (local)

- Visiting from 4-7 PM 1,500
- At funeral home and then to church/synagogue and accompaniment of remains to final committal 900

TRANSPORTATION (local)

- Transfer of deceased from place of death to funeral home 625
- Hearse 650

MERCHANDISE

- Prayer cards, per 100 145
- Acknowledgment cards, per 50 30
- Memorial booklet 65

SUBTOTAL \$9,410

CHOOSE WHAT IS RIGHT FOR YOU.

This fee is for a funeral service with one day of visitation. You may add to or delete any item, except the "Basic services of funeral director and staff."

ADD TO THE SUBTOTAL, the cost of any casket, outer burial container or cash advance items to arrive at the estimated total funeral cost.

Consumer Protection Information: There are some monument/memorial dealers who, shortly after burial, contact the family and claim to represent the cemetery or the funeral home. These persons will often attempt to sell a monument to a family, receive payment, and fail to deliver, or suggest that there are certain requirements for monumentation and that monuments must be placed within a certain period of time. There are no such regulations requiring you to erect a monument or inscribe an existing one.

Optional Packaged Services

These package charges do not include cash disbursements or anything not expressly stated as being provided. For other options, please refer to the selections on this General Price List.

Forwarding of Remains to Another Funeral Home

This package charge includes local transfer (within 10 miles by one attendant) of remains to this funeral home, basic services of funeral director and staff, sheltering of remains for up to 48 hours, embalming, obtaining necessary permits and authorizations (but not the actual cost of death certificates, permits and filing fees), a minimum shipping container and transportation to local airport. It does not include a casket, the use of facilities and staff for any visitation or ceremony—public or private—prior to forwarding the remains, or any sheltering for days on which no post-death activities occur.

■ \$3,495

Receiving of Remains from Another Funeral Home

This package charge includes receiving the remains from another funeral home, sheltering of remains for up to 48 hours, basic services of funeral director and staff, obtaining necessary permits and authorizations (but not the actual cost of death certificates, permits and filing fees), transfer from Newark Airport and local transportation to the cemetery or crematory. It does not include the use of facilities and staff for any visitation or ceremony—public or private—prior to burial or cremation, or any sheltering for days on which no post-death activities occur.

■ \$2,545

Immediate Burial

■ \$3,725 to \$17,650

Our package charges for immediate burial include basic services of funeral director and staff, local transfer (within 10 miles by one attendant) of remains to this funeral home, sheltering of remains for up to 48 hours, obtaining necessary permits and authorizations (but not the actual cost of death certificates, permits and filing fees), local transportation to the cemetery and sanitary care. This charge does not include the use of facilities and staff for any visitation or ceremony—public or private—prior to burial, or any sheltering for days on which no post-death activities occur. Nor does it include the actual cost of the grave at the cemetery, or the cemetery's charges for opening and closing of the grave or an outer burial container (if required by the cemetery).

- Immediate burial with container provided by purchaser (container must meet any applicable state or cemetery requirements) \$3,725
- Immediate burial with union Flat Top casket (gray flannel) \$4,400
- Immediate burial with Bradford casket (20 gauge steel) \$5,160
- Immediate burial with casket selected from our funeral home (in addition to cost of casket) \$3,725

Direct Cremation

■ \$2,950 to \$8,625

Our package charges for direct cremation include basic services of funeral director and staff, local transfer (within 10 miles by one attendant) of remains to this funeral home, sheltering of remains for up to 48 hours, obtaining necessary permits and authorizations (but not the actual cost of death certificates, permits and filing fees), local transportation to the crematory, sanitary care and preparation of remains for identification. This charge does not include the use of facilities and staff for any visitation or ceremony—public or private—prior to cremation, or any sheltering for days on which no post-death activities occur. **Nor does it include the actual cost of the cremation process, which is a crematory charge that is detailed below.**

If you want to arrange a direct cremation, you can use an alternative container. Alternative containers encase the body and can be made of materials like fiberboard or composition materials (with or without an outside covering).

The alternative containers we provide are fiberboard with wood base.

- Direct cremation with container provided by purchaser (container must meet any applicable state or crematory requirements) \$2,950
- Direct cremation with alternative container (fiberboard with wood base) \$3,045
- Direct cremation with casket selected from our funeral home (in addition to cost of casket) \$2,950

Crematory Charge

(Cash Disbursement)

- Additional fee for Rosedale Crematory, Montclair, NJ
Monday through Friday . . \$475
Weekend \$505



Our Family Helping Yours in the Heart of Caldwell

For over a century, our family has been honored to serve the families of West Essex with compassion, care, and commitment. Nestled in the heart of Caldwell, we are more than a funeral home — we are neighbors, friends, and part of the fabric of this community.

Our roots in the area run deep. As fourth-generation funeral directors, our family's legacy of service began in 1924 in Verona and now continues here in Caldwell at Dancy Funeral Home. We bring with us decades of experience and a personal commitment to the families we serve. We understand the values, the traditions, and the strong sense of connection that define this community — because we're part of it too.

Whether you're planning ahead or saying goodbye, we are here to walk beside you with thoughtful guidance, professional care, and a deep respect for your family's wishes. Our doors are open to families of all faiths and backgrounds, and our services are always tailored to reflect the life being honored.

Thank you for trusting us with one of life's most meaningful responsibilities.

— The Prout Family
Dancy Funeral Home
Caldwell, New Jersey



Tailored Services for Every Family

At Dancy Funeral Home, we honor every life with care and respect. Whether you're seeking a simple cremation, a traditional funeral, or an eco-conscious natural burial, we offer personalized services to meet every need and reflect what matters most to you and your family.



Nine Smull Avenue, Caldwell NJ 07006
973-226-1166 • www.dancyfuneralhome.com

A proud member of the Thanexus®, Inc. family—A growing cooperative of independently owned, family-operated, community based funeral homes—providing excellence in funeral service.